



Domestic Violence Against Married Women - The Case of Qatar

Dr. Kaltham Ali Al Ghanem (2008)
Executive Summary

Introduction:

At the present time, women are exposed to a number of challenges due to the different requirements of life and the rapid changes in society developments and individuals' way of life. This is reflected negatively on family relationships according to specific indicators, such as high rates of family disintegration and divorce cases, increased domestic violence incidents and violence against wives in most of communities.

Domestic violence is a societal phenomenon that occurs in all communities, it may be related to socioeconomic factors and has cultural basis that draws a relationship based on gender discrimination. Some might argue, however, that men are also exposed to violence, yet most of official studies and statistics have revealed that women are more exposed to domestic violence. In most cases women face violence from one of the family members, especially males, or from her partner or husband.

Noticeably, The Qatari society is just like other societies with respect to the increased incidents of domestic violence. This was demonstrated by the number of lawsuits submitted before courts, the data provided by the Qatar Foundation for Child and Women Protection, as well as the findings of the two recently conducted studies. The first of which addressed "violence against women in the Qatari society"¹ conducted in 2006, based upon a sample of 2787 females. The study showed that 23% of the sample's subjects were exposed to violence from one of the family members, especially, the father, brother, mother or husband. The second study was conducted however in 2007, about the domestic violence phenomenon in the Qatari Society², and based on a sample of 1121 persons of both sexes, of whom 22.6% indicated that they have domestic violence between their family members.

Based on these conclusions, a field study was carried out in order to identify the different dimensions of this issue and to detect the factors that influence

¹ (Refer to Kaltham Al Ghanem, Domestic violence against women in the Qatari society; previous reference)

²Kaltham Al Ghanem, Domestic Violence Phenomenon- Studying the Case of Qatar, Department of Human Rights, Ministry of the Interior, State of Qatar, 2008, A study under publication.

the nature of the relationships between family members in the Qatari society, especially marital relationships. This study was based on a sample of 1117 married Qatari women during the months of January and February 2008, which examined the marital relationship in the Qatari family. The study has reached a number of important results, through which the social and economic conditions characterizing the reality of the married Qatari women were identified. The study has also revealed the features of the marital relationship in the Qatari family and determined a number of indicators to be utilized for identifying violence victims, type and extent of such violence and reasons leading husbands to use violence against wives. These indicators represent, in their totality, the risk factors through which probabilities or rates of domestic violence against wives are anticipated. These results can also be used as indicators by the entities concerned with women and family protection, and by medical institutions, to identify cases exposed to violence within marital relationships, that in order to help formulating protective programs of intervention for domestic violence and to contribute in building a balanced and healthy marital relationship.

First: Domestic violence- Concept and Definition

Domestic violence can be defined from the legal and social point of view as "any abusive behavior amongst family members sharing the same house". The same term is also used to refer to any violence against woman by her partner³. Domestic violence also includes: Physical and sexual abuse of women in house, within the family or in a sexual relationship. Women are exposed to violence in sexual relationships more than any other relationships⁴.

Husband-to-wife Violence:

"Any action committed by the husband and leads to or may lead to any harm or psychological, physical, financial or sexual suffering of the wife. This includes the threatening to undertake any such action or abusive deprivation of freedom"⁵. There are some other factors that permit increasing the difference in power and contribute to more chances of control, dominance and exposure to the violence of the stronger party, such as the difference in income resources, availability of extra financial resources, family relationships, health condition or even ability of the stronger party to terrify and strike fear in the heart of the weaker party. Any misuse of such force includes physical violence or psychological intimidation leading to any abuse.⁶

³ -Encyclopedia Britannica., <http://www.britannica.com.ezproxy.qu.edu.qa/eb/article-9124958/domestic-violence>

⁴ - UN Report About Violence Against Women, Facts & Statistics, 2007

⁵ - Muhammed Sufian, level and phenomenon of violence against wives and its relationship to some social and political variables, Second Conference of Community Participation program for Preventing Domestic Violence in Palestine, 9-8-2005, Gaza, Palestine.

⁶ - A.E. EYLER, M.D., M.P.H., and MARIAN COHEN, A.C.S.W. Case Studies in Partner Violence, American Academy of family physicians, December, 1999.

Violence against women was initially defined after the revelations by international statistics concluding that women are more likely to face domestic violence, in particular that of her partner, as well as that there is an increased number of violence incidents reported annually. Based on different communities, the international survey carried out by the WHO has revealed that 10% to 69% of women faced physical violence from their partners during the intimate relationship at a certain time of their lives.⁷.

Second: Indicators showing a probable violence against wives

There are some risk factors contributing to or increasing violent spousal behaviors. However, presence of such factors does not necessarily mean that a violent behavior will exist. Nevertheless, these factors are used as a tool to anticipate such behaviors⁸.

Risk factors included in several studies have revealed that domestic violence is more likely to be experienced by⁹:

- Women with low income or suffering poverty rather than those with high income.
- Women with lesser educational level, rather than those educated or received higher education.
- Partners or spouses with different levels of income, education and professional position.
- Women with previous violence experiences or faced violence in their original families.
- Families in which the husband is dominating and takes all decisions.
- Persons suffering from disabilities are more likely to face violence from their partners.

However, no evidence was introduced by the study that disabilities contribute to increasing domestic or husband-to-wife violence.

- Cases where spouses are from different cultural environments.

According to the above results, the lower income, lower educational level, difference in financial, educational and professional level and previous violence experiences during childhood or between parents of one or both spouses constitute key variables and factors increasing probability of violence between spouses. There are also some additional factors, such as¹⁰ possession of a weapon by the abuser, presence of wife's stepson living at home, when the dominating partner is abandoned by wife or female partner, and threatening to leave or to marry another.

⁷ - world health organization , World Health Statistics 2008.

⁸ -Patricia Tjaden,Nancy Thoennes,Extent,Nature, and Consequences of Intimate Partner Violence, research report findings from the National Violence Against Women Survey, U.S. Department of Justice, Office of Justice Programs, July 2000

⁹ - Ibid.

¹⁰ - JC Campbell, D Webster, J Koziol-McLain, C Block, Risk Factors for Femicide in Abusive Relationships: Results from a Multisite Case Control Study, American Journal of Public Health, July 2003, Vol 93, No. 7.

Third: Consequences of Inter-spousal Violence:

There are a number of indicators characterizing the cases of spousal violence, such as¹¹:

- Physical injuries.
- Stomach diseases.
- A number of syndromes.
- Depression and willingness to suicide.
- Deterioration of wife's reproductive health.
- Unwillingness to have pregnancy.
- Preterm birth.
- Frequent doctor visits.
- Tendency of battered wives to stay in hospital for a longer term than wives who do not face violence.
- Deterioration of wife's performance at work.
- Absence from work for longer periods than that of wives who do not face violence.
- Inability to continue at work.

These indicators can be used as a tool to detect husband-to-wife violence incidents. Additionally, health results can help in recognizing the reasons for increasing the probability of domestic violence, and in identifying type of services that may help those who live with persons mistreating them.

Fourth: Qatari Woman and Family Life - Statistical Overview

Society conditions have changed and consequently, the reality of Qatari women changed accordingly. Education progress, economic growth and development, diversified work opportunities, and cultural openness are all factors contributing to change of women's family and societal positions and roles. Therefore, this chapter analyzes demographic and social variables affecting women's familial reality.

1- Number of females in the Qatari society:

According to the latest census in 2004, number of females in the society reached 165195 persons representing 27.4% only of the entire population. Since the sixties of the last century and due to incoming immigrants during modernization and development eras, population structure of the Qatari society has witnessed a disorder in gender structure. In most cases, immigrants are males coming to work in the activities growing day by day. According to population census of 2004, males constituted two thirds of the entire population, and most of them are immigrants especially from Asian countries. Hence, gender percentage has reached 200 males to 100 females. The latest population figures officially declared in 2008 ¹² indicated that number of females declined to 24.3%. As such, women have become a minority in a society with male dominance, being in terms of number, size,

¹¹ - World Health Organization, Intimate partner violence Report, 2002.

¹² - The previous reference.

contribution to economic activities or even size and type of societal participation.

2- Social Variables:

Official statistics can contribute to the establishment of a database about the features characterizing the demographic and social actuality, help identifying social phenomena and some problems such as, early marriage, divorce and spinsterhood, and can be used to provide an initial diagnosis for the characteristics of many phenomena and problems, as well as to increase predictability of future trends. See the following Schedule:

Table (1)
Statistical Summary of Women's Familial Reality

1. Spinsterhood rate in the Society (Entire female population at ages of 34-49) ¹³	14.3%
2. Spinsterhood rate at ages of 30-34 ¹⁴	20%
3. Early marriage rate among females at ages of 15-19 ¹⁵	3.4%
4. Divorce percentage in the society ¹⁶	32.6%
5. Percentage of divorcees in the entire female population ¹⁷	3.1%
6. Percentage of divorce before consummation of marriage ¹⁸	40.9%
7. Percentage of widows ¹⁹	7.4%
8. Percentage of women's exposure to violence ²⁰	23.4%
9. Average number of maids in the Qatari family ²¹	1-3
10. Percentage of women sustaining their families ²²	10%
11. Number of Qatari women married to non-Qatari men ²³	351

Considering statistics, we find that woman faces some social problems. Especially with respect to the growing divorce rate which in particular affects women status negatively; additionally, Field studies and official statistics have revealed other problems, such as late marriage; widowhood rate which is usually higher amongst women; Qatari women married to foreigners and their

¹³ - General Population census 2004.

¹⁴ - The previous reference.

¹⁵Supreme Council for Family Affairs Man and Woman Report. 2005

¹⁶ - Annual report of marriage and divorce statistics, 2005.

¹⁷ - General Population census 2004.

¹⁸ - Annual report of marriage and divorce statistics, 2005.

¹⁹ - General Population census 2004.

²⁰ -Kaltham al-Ghanem, Violence against woman study, previous reference, 2007.

²¹ - Kaltham al-Ghanem, Violence against woman study, previous reference, 2008.

²²Supreme Council for Family Affairs Man and Woman Report. 2005

²³Supreme Council for Family Affairs Man and Woman Report, 2005.

children still yet to have full citizenship rights; and the phenomenon of domestic violence experienced particularly by women.

Fifth: Methodological Procedures

In light of these variables, women are very likely to face violence from husband. Hence, it is crucial to carry out a field study to identify the rate of domestic violence in the society, in order to have a proper understanding of the problem, to find its reasons and to identify its impacts on women, family and the society in general.

Study objectives are determined as follows:

1. Identifying types of husband-to-wife violence emerging in the Qatari society.
2. Identifying reasons for husband-to-wife violence.
3. Determining risk factors increasing probability of husband-to-wife violence.
4. Determining means and solutions for facing husband-to-wife violence.

In order to accurately identify the extent of husband-to-wife violence, a number of indicators have been formulated, where the presence of which demonstrates that the wife concerned faces violence from her husband. Also other indicators have been formulated to show any increase in risk factors that indicate the probability of husband-to-wife violence. Consequently, Results of previous studies and official data were used to determine the most important indicators. Such indicators are enumerated in the following schedule:

Table (2)

Domestic Violence Indicators	Factors increasing probability of violence against wife
- Marital problems	- Lower educational level of woman
- Discontent with marital life.	- Low income of family.
- Threatening by battering, abusive tools, weapon or divorce.	- Unavailability of wife's personal income.
- Wife battering or insulting before husband's family.	- Nature of residence and number of persons residing therein.
- Children battering or threatening by partner.	- Husband drinking wines and alcoholic drinks
- Child sexual abuse	- Husband's anger for trivial reasons.
- Insulting or mistreating partner.	- Husband cheating.
- Forced sexual intercourse	- Having doubts about wife's behavior.
- Imposing social isolation on wife.	- Manipulating wife's feelings.
- Encroaching upon wife's money.	- Demanding wife to quiet work.
	- Wife's acceptance of violence she encounters.

The said tool was applied to a randomly sampled number of wives. The essential condition for applying such tool was:

- Surveyed woman must be married.
- Must be Qatari national.

Being a social survey, the study used a minimum number of 1200 cases to apply such tool, which was successfully applied to the determined sample. After revision and scrutiny, 83 forms were removed due to errors in application. However, this had no impact on study results, where the number of completed forms reached 1117, which is enough to conclude results that can be generalized to the reality of married women in the Qatari society. Samples were distributed to geographic areas as follows: In first place comes Doha with 64%, then Ar-Rayyan with 20% and Al Wakrah with 5%, and the remaining percentage was distributed to other areas. This distribution is relatively close to the distribution of Qatari population to geographic areas, a matter which indicates that the sample was properly distributed, and furthers the possibility of generalizing research results.

Sixth: Key Results of the Study

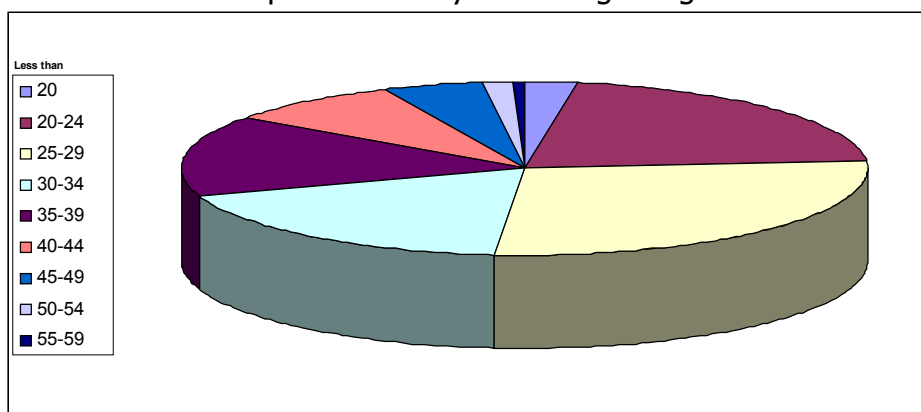
Using husband-to-wife violence indicators, which were based on results of previous studies on the topic as well as the results of studies recently conducted about violence against woman and domestic violence in the society, and re-emergence of same domestic and husband-to-wife violence patterns according to data officially announced, helped in concluding the following important results:

1. Social and economic characteristics of married women in the Qatari society. The following schedule summarizes variables uncovered by the study:

Table (3)
Summery of married Qatari women's characteristics
From factual results of the field study

Variables	Results
Average wife's age	30.6
Average number of persons residing in the house	8.99
Average number of maids	2.32
Average monthly income in Riyal	10610
Percentage of wives with personal income	34.8
Average number of marriage years	9.80
Average number of family members	5.77
Average number of children	4.26
Percentage of women with university education	53.6%
Percentage of women employed	52.1%
Average term of marital relationship	9

Figure (1)
Participants in study according to age



- Average age of married Qatari women is relatively low, as most of them are at the age of 30.
- Most of Qatari women live in a marital relationship with an average term of 9 years. This means that they have married at the early twenties.
- High reproductively rate, as the average number of children exceeds four, even though they have not reached climacteric age, and accordingly qualify to have a greater number of children.
- Most of married women live in big families with more than 8 members.
- Study showed that there are 58 poor families in the Qatari society with less than 1000 Riyal income and other 145 families with as low as less than 5000 Riyal income. Apparently, although the considerable economic growth and the growing and the higher average per capita income, there is a category in the Qatari society with low economic standard and has yet to have its share in the current financial growth.
- The current study has revealed that although the greater percentage lives in good economic conditions, still there are 34.8% with no personal income. This is a high percentage for a rich society as the Qatari society, which confirms the financial difference between men and women.
- Slightly more than half of the sample received university education, which reflects the high educational level of married women.
- More than half of the sample subjects are employed. However, there are 34.5% who are unemployed.

2. Nature of Marital Relationship in the Qatari Society

- 12% of the sample subjects have constant problems with their husbands.
- 43% of the sample subjects have problems with their husbands from time to time.

- Only 17% of the sample subjects have never faced any problems in their marital life.
- 11% of the sample subjects are totally discontent with their marital life.
- 27% of the sample subjects are, from time to time, discontent with their marital life.

These results should be carefully considered by entities concerned with family affairs and family guidance. It is also necessary to have programs enabling the family to face such issues, to reduce disputes between spouses and to limit the rate and intensity of marital problems. Hence, discontent with the marital life may end at separation, family disintegration, domestic violence and other negative psychological and social consequences relating thereto.

3. Rate and types of husband-to-wife violence.

- The study has revealed that 10%-14% of the sample subjects face different types of husband-to-wife violence.
- Although most wives ranging from 70% to 80% do not face any type of domestic violence, the study has uncovered different types of violence with high to medium degrees.
- Threatening with weapon, battering and slapping before children, children sexual abuse, forced sexual intercourse and encroaching upon wife's money were among the most dangerous behaviors uncovered by the study and ranged from 3% to 12% of the sample.
- Few husbands had some perverted behaviors, such as drinking wines and having sexual relationships with maids.
- Imposing social isolation, insulting, spitting, expelling the wife from bedroom, abstention from talking to wife for long periods and adultery were among types of violence uncovered by the study and represented 7% to 16% of wives.

4. Emergence of behaviors relating to partner's character increases the probability of husband-to-wife violence.

These behaviors can be addressed through spreading awareness and rehabilitation to ensure a greater protection for wife and to protect the family from disintegration and collapse, and provide a better care for children.

Following are the most important behaviors uncovered by the study:

- Husband's anger for trivial reasons. The study has revealed that this behavior is very common amongst husbands, where 308 wives faced husband's anger and represented 27.6% of the sample. Irascibility is one of the behaviors uncovered by the study, being one of the features of husbands practicing violence against their wives. It is also one of the indicators of husband or intimate partner violence, which may develop into even more violent behaviors, such as insulting and battery.
- Preventing woman from expressing her opinion (the dominating personality), where 16.4% of married women face suppression by their husbands.
- Scorning wife and destroying her self-confidence, which experienced by 12.6% of the sample. This behavior indicates non-recognition of

women's role and rights, as well as the will for having more dominance over her. In an obvious manner, all these factors lead to practicing moral violence against women. According to studies, physical and moral violence is lesser in communities with a public culture recognizing woman rights, behaviors honoring woman and upholding her role in decision making, and with deterrent laws for any person practicing violence against woman.

5. Cultural factors affecting marital relationship

- As a result of cultural values affirming gender discrimination in terms of status and authority, an uneven relationship between spouses or partners was established. Thus, the marital relationship has become a follower partner and a dominated partner. In many cases, husband-to-wife violence is a result of wife's objection to the nature of this relationship and her willingness to be a life partner rather than a follower.
- Cultural values giving precedence to males over females have caused a willingness and preference to have male children in some families. Hence, 5.3% of the sample indicated that their husbands blamed them either constantly or from time to time for having female children. This represents some aspect of moral violence, which impels women to repeat pregnancy in order to have a male child satisfying the husband.
- A stronger preference is given to woman's housekeeping roles by the cultural values. Some holds the opinion that home is the woman's place, and consequently she is not permitted to go out for work, which is not deemed a right that she can practice whenever she wants. The study has revealed that about 13% of the sample face demands from their husbands to leave work and dedicate their full-time to family.
- Acceptance of violence by some wives constituting 13.5% of the sample. This also can be demonstrated as 38% of the sample admitted that they are discontent with their marital life, and other 6% expressed their discontent indicating that they had no other solutions. In such cases women are accustomed to admit man's authority, even if they experience violence.

Table (4)

Summary of most important results of the study

factors increasing probability of violence against wife	Probability degree
Low educational level of wife.	31% of illiterate wives and 26% of wives with primary education face violence.
Low income of family.	20% of the sample subjects belong to families with monthly income less than 5000 Riyal.
Unavailability of wife's personal income.	34.8% of the sample do not have a personal income.
Number of persons residing in the house.	8 persons

Unavailability of independent dwelling.	36% live with husband's family
Divorce experience	12%
Sleeping in another room separately from husband.	14%
Having problems with husband constantly.	12%
Having problems with the husband from time to time.	43%
Discontent with marital life.	38%
Husband drinking wines and alcoholic drinks	4.6%
Husband's anger for trivial reasons.	27.6%
Husband cheating.	9.0%
Having doubts about wife's behavior.	7.6%
Manipulating wife's feelings.	12.6%
Demanding wife to leave work.	13.0%
Ignoring wife's sexual desires.	13.3%
Failure to maintain wife and children.	10%
Wife's acceptance of violence she experiences.	13.5%

Domestic Violence Indicators

Probability degree

Wife's suffering from health problems	37%
Suffering from more than one health problem.	10%
Battering or insulting wife before husband's family.	10.4%
Battering wife before children.	10 %
Slapping on face.	7.3%
Calling wife with an unpleasant name.	10%
Insulting and humiliating the wife.	13%
Spitting on the wife.	8 %
Refusing to talk with the wife.	12%
Forced sexual intercourse	12%
Imposing social isolation on wife.	16%
Encroaching upon wife's money.	7%
Child sexual abuse	3%
Threatening with a weapon.	4.5%
Threatening with divorce.	10.1%
Threatening to batter children.	6.3%

Seventh: Recommendations

Although the greater percentage of women does not face violence from their husbands, the study has revealed that some of them face all physical and moral aspects of violence. According to results, 10.4% of wives face battering by their husbands, 12% of the sample have constant problems with their husbands, 13% are subject to insulting, while lives of 4.5% of women are in danger as their husbands threaten them with a weapon, and children of 3%

face sexual abuse by the husband in addition to other aspects of violence uncovered by the study. In light of such results, the society is in need of some protective and curative measures applicable through activating, developing and applying programs limiting domestic violence, especially against women, wives and children.

Following are the proposals recommended by the study:

1- Developing statistics of domestic violence against women.

Considering official data on domestic violence, and unavailability of scientific methods for recording violence incidents, the society needs to apply a number of measures contributing to establishing a database about the problem. These measures include:

- Urging the concerned authorities (security, judicial and medical authorities, care and civil society institutions) and obliging them by law to record violence incidents reported.
- Developing methods for recording such incidents by the concerned departments to include using certain indicators identifying violence, its type, characteristics of the victim and of assailant, and the manner by which the victim dealt with such violence.
- Establishing an entity, center or observatory for collecting data, determining its sources, verifying that incidents recorded are not repeated, and classifying the same. It is also recommended to establish a national center for social, behavioral and criminal researches.
- Publishing data and allowing researchers and persons concerned to access such data.
- Carrying out more studies, researches and reports about domestic violence and violence against women phenomena, and using the same to design programs for confronting such violence.

2 - Enacting deterrent legislations and laws to ensure protection of women and children from domestic violence.

It is noteworthy that the Qatari criminal law stipulates no penalty for domestic violence and offenses committed within the family. This is a loophole used by the person committing violence against individuals residing with him or under his custody. Additionally, no provisions were made by law concerning the so called "honor crimes, which in some cases may extend to murder or house imprisonment. Although such murders occur frequently, the severest penalty imposed does not exceed few years or sometimes months of imprisonment. Thus, People's fear of scandal has become even more effective than law, which failed to effectively address this type of crimes that increase day by day due to the rapid economic and cultural changes.

In light of facts uncovered by the study with respect to domestic violence against some women and which extends to battering, forced sexual intercourse, isolation, mocking, deriding and abusing children, the study recommends extending a legal protection for children who fall victims to any type of domestic violence. This includes the following procedures:

Considering domestic violence against women and children as a crime punishable by law.

- Introducing a new law besides criminal law providing expressly for domestic violence offenses.
- Determining deterrent penalties according to type of offense committed and as per Muslim law.
- Termination of Guardianship for the guardian encroaching upon rights of a minor or woman, even if she exceeds the legal age, through offenses or flagrant battering which leads to physical or psychological disability, intimidation, threatening with a gun or any other weapon, burning, breaking organs or sexual abuse.
- Promptly activating the role of family court and applying family and child laws.
- Developing such laws to coincide with changes and new developments as well as results of scientific studies in field of family studies and domestic violence.
- Determining limits of man's authority over woman in the family. Repealing the current text of family law which entitles the husband to prevent his wife from university education, in case it is, according to his estimation, affects her home duties. This text conflicts with principles of the constitution, human rights and Islamic teachings, which recommend education, being a part of the worship.

3 - Developing role of judicial authorities and police with respect to domestic violence cases.

Judicial authorities and police are one of the most important authorities that can provide detection and protection measures at the same time, and consequently limits domestic violence. In this context, it is necessary to heed the following:

- Endeavoring to affirm the power of law through elimination of familial and consanguine circumstances and considerations and preventing society culture from influencing the even rights of individuals by means of protection and litigation.
- Enlightening judicial and police staff on the importance of abidance by individual rights prescribed by law.
- Developing ability of judicial and security authorities to deal with domestic violence incidents through holding training and awareness courses and workshops to discuss best application of such laws and methods for dealing with domestic violence.
- Holding workshops to discuss the Islamic law's point of view as well as religious teachings about domestic violence.
- Conducting legal studies about human rights and laws appertaining to protection from domestic violence and violence against women and children.

4- Developing the ability of medical institutions to identify domestic violence incidents

Most individuals frequently visit physicians and health centers either for health reasons, injuries or sometimes for drawing attention. Therefore, medical institutions equipped with the necessary skills and procedures enjoy the highest ability to identify symptoms of violence and to detect cases facing such violence, whether being women, children or any other victims. Studies have uncovered that married women who fall victims of domestic violence are the most frequent visitors to hospitals and medical clinics. Violence experienced by such women, whether physical or moral, leads to many health and psychological problems.

Consequently, medical institutions can assume the mission of identifying domestic violence incidents. However, domestic violence incidents are rarely reported due to victim's fear from the assailant, fear from scandal, divorce, termination of children custody or even for financial inability. Sometimes such incidents are not reported due to the limited knowledge of children or even of adults, or due to disability, especially mental or hearing and speaking disabilities.

As a result of the above factors, many cases coming to care centers and emergency departments were not identified. This is usually due to lack of skilled professionals and social workers in medical institutions, lack of appropriate methods for recording, or dominance of certain entities which tend to ignore reasons for any such incident in case it happens at home. In most cases such incidents are recorded as home incidents, such as falling, crashing, burning, etc, or according to what is indicated by the victim or his guardian, while in fact it is a result of violence from one or more of the family members (the study has revealed that there are some violent families, in which members practice violence against each other).

The role of physicians, nurses, police officers and social workers in health care centers and emergency departments is generally unclear or ineffective as far as identifying and recording domestic violence incidents is concerned. To activate such role, more attention should be given to the following:

- Increasing ability of the medical institution to identify cases considered as domestic violence incidents. Indicators concluded by the present study as well as other studies can help such institutions identifying cases exposed to violence, even if it was not reported, and can further be used as a guidelines for detecting domestic violence cases.
- Determining procedures to be followed by physicians and their assistants, social workers and family police (in case it is established) whenever a domestic violence case is received or any case which might have faced domestic violence.

5- Developing ability of institutions to reach and identify domestic violence cases and to provide them with the professional assistance.

Two previous studies (concerned with violence against women and domestic violence) have revealed that most of samples examined have never dealt with institutions concerned with domestic violence, and the greater percentage of society members have no knowledge about such institutions and their role, including violence victims.

This indicates the need of such institutions to develop its abilities to reach cases facing domestic violence. To this end, the following procedures are suggested by the study:

- Activating role of existing institutions and establishing more institutions to face this serious problem.
- Integrating civil society institutions, being supportive institutions, to identify domestic violence incidents or to raise awareness on how to confront the same, etc.
- Taking the necessary measures to develop ability of institutions concerned with woman and child protection to extend all types of legal protection.
- Granting workers in such institutions the judicial capacity to detain any persons practicing violence against their co-dwellers or against other family members.
- Training workers in such institutions to deal with domestic violence incidents.
- Developing methods utilized by such institutions to locate domestic violence incidents through coordinating with medical, security and educational bodies. Such bodies can also be utilized to train social workers on how to identify violence incidents among school children.
- Coordinating with the media to raise awareness of the important role played by such institutions.
- Designing women protection programs with a higher ability to locate domestic violence incidents, especially wives facing violence from their husbands.
- Designing programs for protecting children from sexual abuse.
- Designing rehabilitation programs for mothers experienced domestic violence as well as their children to alleviate negative consequences of such violence.

6- Changing concepts and basis of the relationship between both sexes and establishing a relationship based upon partnership.

Noticeably, cultural values have a direct and indirect impact on determining the nature of the relationship between both sexes. This impact can be realized in many cultural symbols and common behaviors, a matter which indicates the uneven relationship between the two sexes. In many occasions, however, woman has a much lower position than man, and therefore believes that she deserves man's wrath for her misbehaving. On the other hand she does not enjoy the same rights as man, and further abstains from reporting such violator or abuser because she loves him, or due to his being a guardian over her under law or according to customs, traditions and norms.

Therefore, a program of action to change some cultural concepts should receive special attention from all educational, informative and social society institutions, whose role should be activated to this effect. Accordingly, the study recommends that such program should meet the following requirements:

- Changing the cultural concepts contributing to unequal relationships between both sexes in the society, and to this end, coordinating with the media and educational bodies to apply various programs oriented towards both sexes.
- Changing view of youth about women, and instilling values of self-confidence and positive attitudes into girls.
- Formulate educational and informative programs in order to reduce the gap between the status of woman and man within the Qatari family.
- Raise women's awareness of their rights and importance of confronting and reporting violence, even from persons we love, correcting women's view about themselves and about the nature of their relationship with men and husbands.
- Change concepts of marital relationship between spouses and potential spouses. Design training and rehabilitative programs to enlighten spouses and potential spouses about the correct and sound practices in marital relationships.
- Train women exposed to violence on how to confront such violence, and persuading them that they do not deserve such violence and that there are other approaches and solutions which can be followed to develop the marital relationship.

Eighth: Program of action for protection from domestic violence in the next phase

Three approaches were suggested by the study for the next phase:

1. Developing procedures for detecting domestic violence incidents, using indicators of risk factors and adopting a list of procedures to be followed for identifying domestic violence incidents unreported by victims or where the victim is a child, disabled or elderly person:

A- Role of medical institutions:

Noticing that the patient or injured person has faced violence, the physician or his assistants may follow a number of procedures, which include using some indicators that help assessing the case. Following are the indicators that can be utilized to identify violence incidents admitted to hospitals:

- Physical injuries (bruises- burns- fractures- injuries and scratches- bites tooth breakage- ear injury).
- Emaciation- exhaustion- worry- depression- anxiety- involuntary urination.

- Patient's age- sex (young- female- disabled- elderly).
- Medical record and recurrent hospitalization.
- Suffering from several diseases.
- Constant headache.
- Psychological disorders.
- Abortion and premature birth.

Whenever in doubt that the case under examination has experienced violence or repeatedly admitted to hospital due to injuries or psychological disorders, such case shall be referred to the social worker.

B- Social workers at hospitals, emergency departments or at health centers are responsible for meeting the patient, being male or female, and for collecting the following data:

- Examining family circumstances: family circumstances can be examined by the social worker through the following indicators:

- Husband's, father's or brother's addiction to alcohol or drugs.
- Number of family members.
- Family's economic level.
- Any family member with criminal history.
- Monitoring behaviors of concerned persons towards the patient.
- Meeting family members.
- Examining nature of intra-family relationships.
- Meeting the person who has committed violence against the patient.
- Identifying the type of violence committed against the patient.
- Identifying source of violence.
- Examining violence reasons.

- Preparing a report on the case:

- Such report shall be submitted to security bodies or family police, if any, especially when such violence constitutes a crime from the legal point of view. On the other hand, such bodies shall cooperate with institutions concerned with protection from violence to provide victims with services, as the case may be.
- In case the assault is not distinguished as a crime punishable by law, the report shall be submitted to institutions concerned with family rehabilitation and violence incidents, which shall, in its turn, provide the necessary services.

2. Domestic violence protection program

Family members, especially children and women are exposed to offense, violence, harassment and sexual abuse by other family members, relatives or persons close to the family in general, such as servants, driver, etc. Particularly, when the householder, brothers or any of the family members are drug or alcohol addicts, have criminal history, suffer from psychological disorders or exposed to violence from alcohol or drug addicts. Therefore, the protection program should endeavor to help victims of domestic violence to benefit from

services extended by the concerned authorities, such as Qatar Foundation for Protection of Women and Children, Family Counseling Center, Humanitarian Support Program and Social Rehabilitation Center. Violent persons, and persons experienced offense, sexual harassment, or violence should receive various services to be habilitated or rehabilitated. Additionally, Violent families with members committing violence against each other should also be rehabilitated.

Protection program is based on the following axes:

- Providing medical examination, treatment and psychotherapy.
- Providing legal support, studying family's status, living and social conditions and devising a strategy for treatment, or referring such family to the available institutions.
- Providing psychological and social rehabilitation for violent families and victims, such as anger and violent behavior control.
- Determining negative consequences of experiencing or watching domestic violence especially between parents, and verifying that such violence will not be imitated by children in the future.
- Raising societal awareness and responsibility towards confronting domestic violence and establishing a partnership between the concerned institutions to this effect.
- Raising victims' awareness of protection methods, which can be utilized to confront such violence in addition to legal awareness and consultation.
- Cooperating with family police once established.

3. Holding workshops

- Holding a workshop to discuss developing and activating laws. This can contribute to limiting domestic violence and reducing its effects on individuals, family and society.
- Holding a workshop to develop mechanisms of communication with domestic violence victims.
- Holding a workshop to discuss means for addressing and confronting domestic violence.